

MeatG uide









Welcome to the MeatG uide, your source for all cuts of meat offered by the skilled meat cutters of PERFORMANCE FOODSERVICE.

TABLE OF CONTENTS

RIBEYE STEAKS	FILETS	PORTERHOUSE & T-BONE13
Ribeye Filet2	Filet Steak.....7	BALL TIP14
Ribeye Clean2	Range Filet8	SHORT RIBS15
Ribeye Lipon.....3	B/W Filet.....9	CUBE STEAK15
Ribeye Cowboy.....4	Filet Bone In9	VALUE ADDED16
Ribeye Tomahawk.....4	Filet Medallions10	PO RK
Ribey Bone-In4	Filet Chain On.....10	Bone-In18
Ribeye Split Bone4	Filet B/F.....10	Boneless.....20
	Filet Pit Style10	Pork Ribs22
	SIRLOIN	Pork Steak22
	Filet.....11	LAMB23
STRIP STEAKS	Filet B/W11	VEAL24
C/C Strip Steak.....5	Top Butt.....11	REBOX25
Bone In C/C Strip Steak5	Full Cut Top Butt12	
E/E Strip Steak6	Coulotte Jaccarded.....12	
First Cut6	Jaccarded Whole.....12	

ALL BEEF IS WET AGED A MINIMUM OF 21 DAYS

KEY

 USDA PRIME	 CAB	 USDA CHOICE	 USDA SELECT	 USDA VALUE ADDED
 PORK	 BERKSHIRE PORK	 LAMB	 VEAL	 REBOX

GLOSSARY OF TERMS

C/C or CC = center cut
 E/E or EE = end to end cut – the loin is cut from one end to the other
 B/W = bacon wrapped.
 Baseball Cut or Sirloin Filet = center cut top sirloin cut filet style (round)
 B/F = B/f
 Cube 2X = run through the cubing machine 2 times
 NV = no vein
 C/ON = Chain On – the chain on the PSMO is still attached when the steaks are portion cut
 Range Steak = a filet cut out of the head of the tenderloin
 UP = refers to a loin that is heavy. On a ribeye it would be 14 lbs and higher for each loin.
 Down or DWN = refers to a smaller loin. On a ribeye it would be 14 lbs and down.
 Lipon = refers to the tail of the loin
 Clean = refers to a steak or subprimal were the tail has been removed.

Cowboy = is a Bone In ribeye steak that has the meat on the bone cleaned (Frenched) down to the loin eye.
 Split Bone = is a Cowboy ribeye steaks were the bone is split in half. This allows for smaller ounce size steaks to be cut
 No Roll = beef that doesn't have a quality grade. Also known as NR
 First Cut or Vein Steak = the first few cuts off of the hip end of the striploin. The connective tissue forms a half moon shape separating the loin eye from the small muscle.
 Pit Style Filet = Tenderloin steak cut from NAMP # 189A PSMO Tenderloin heavy sinew removed and steaks cut to portion size. All steaks will have silver skin and side muscle attached.
 Full Cut = a top sirloin that is cut with the cap still attached.
 Loin Chop = also known as a Porterhouse chop or an Iowa Chop. It is a pork chop with the tenderloin and loin side both attached.
 Pit style Pork Chop = Pork chop with chine bone removed and tender out.

RIBEYE STEAKS

RIBEYE FILET



PRIME FILET NAMP # 1112C

PACK SIZE	10# Number	PACK SIZE	5# Number
20/8 oz	850199	10/8 oz	246409
16/10 oz	236168	8/10 oz	246410
14/12 oz	236167	7/12 oz	246411
12/14 oz	236166	6/14 oz	246412

CAB FILET NAMP # 1112C

PACK SIZE	10# Number	PACK SIZE	5# Number
20/8 oz	236182	10/8 oz	246239
16/10 oz	236181	8/10 oz	246253
14/12 oz	236180	7/12 oz	246254
12/14 oz	236169	6/14 oz	246255
10/16 oz	236170	5/16 oz	246256

RIBEYE CLEAN



PRIME CLEAN NAMP # 1112

PACK SIZE	10# Number	PACK SIZE	5# Number
20/8 oz	246334	10/8 oz	246337
16/10 oz	246335	8/10 oz	246338
14/12 oz	246336	7/12 oz	246339
12/14 oz	857139	6/14 oz	246340
10/16 oz	869622	5/16 oz	246341

CAB CLEAN FROM DOWN NAMP # 1112

PACK SIZE	10# Number	PACK SIZE	5# Number
40/4 oz	245972	20/4 oz	245958
32/5 oz	245973	16/5 oz	245970
28/6 oz	245980	14/6 oz	245971
24/7 oz	245981	12/7 oz	245983
20/8 oz	987079	10/8 oz	245984
18/9 oz	245982	9/9 oz	245985
16/10 oz	985627	8/10 oz	245986
14/12 oz	964110	7/12 oz	245987

CAB CLEAN FROM UP NAMP # 1112

PACK SIZE	10# Number	PACK SIZE	5# Number
16/10 oz	174010	8/10 oz	245998
		7/12 oz	245999
12/13 oz	246872		
12/14 oz	964146	6/14 oz	246001
10/16 oz	75755	5/16 oz	246002

CHOICE CLEAN FROM DOWN NAMP # 1112

PACK SIZE	10# Number	PACK SIZE	5# Number
40/4 oz	246280	20/4 oz	
32/5 oz	246281	16/5 oz	
28/6 oz	246282	14/6 oz	249411
24/7 oz	246283	12/7 oz	249811
20/8 oz	246284	10/8 oz	246286
18/9 oz	246285	9/9 oz	
16/10 oz	176010	8/10 oz	246287
14/12 oz	176012	7/12 oz	246288

CHOICE CLEAN FROM UP NAMP # 1112

PACK SIZE	10# Number	PACK SIZE	5# Number
20/8 oz	982176	10/8 oz	246292
16/10 oz	985375	8/10 oz	246302
14/12 oz	173605	7/12 oz	246303
12/14 oz	985076	6/14 oz	246304
10/16 oz	246289	5/16 oz	246305

SELECT CLEAN FROM DOWN NAMP # 1112

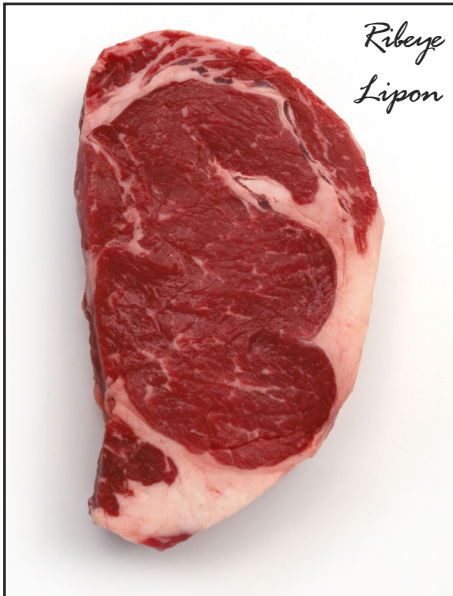
PACK SIZE	10# Number	PACK SIZE	5# Number
40/4 oz	965575	20/4 oz	246436
32/5 oz	246413	16/5 oz	246422
28/6 oz	911411	14/6 oz	246423
20/8 oz	246414	10/8 oz	246424
16/10 oz	246379	8/10 oz	246425

SELECT CLEAN FROM UP NAMP # 1112

PACK SIZE	10# Number	PACK SIZE	5# Number
20/8 oz	75762	10/8 oz	246429
16/10 oz	979639	8/10 oz	246440
14/12 oz	990684	7/12 oz	246438
12/14 oz	74492	6/14 oz	246439
10/16 oz	985067	5/16 oz	246450

RIBEYE STEAKS

RIBEYE LIPON



PRIME LIPON NAMP # 1112A

PACK SIZE	10# Number
20/8 oz	246342
16/10 oz	246345
14/12 oz	246346
12/14 oz	246347
10/16 oz	246348

CAB LIPON FROM DOWN NAMP # 1112A

PACK SIZE	10# Number	PACK SIZE	5# Number
28/6 oz	245994	14/6 oz	245988
24/7 oz	245995	12/7 oz	245989
20/8 oz	939820	10/8 oz	245990
18/9 oz	245996	9/9 oz	245991
16/10 oz	939816	8/10 oz	245992
14/12 oz	245997	7/12 oz	245993

CAB LIPON FROM UP NAMP # 1112A

PACK SIZE	10# Number	PACK SIZE	5# Number
16/10 oz	71059	8/10 oz	246003
15/11 oz	247157		
14/12 oz	939813	7/12 oz	246004
12/14 oz	939809	6/14 oz	246005
10/16 oz	983813	5/16 oz	246007

CHOICE LIPON FROM DOWN NAMP # 1112A

PACK SIZE	10# Number	PACK SIZE	5# Number
32/5 oz	246311	16/5 oz	246314
28/6 oz	246312	14/6 oz	246315
20/8 oz	211867	10/8 oz	246316
16/10 oz	246313	8/10 oz	246317

CHOICE LIPON FROM UP NAMP # 1112A

PACK SIZE	10# Number	PACK SIZE	5# Number
20/8 oz	918504	10/8 oz	246299
16/10 oz	71064	8/10 oz	246330
14/12 oz	985378	7/12 oz	246331
12/14 oz	918477	6/14 oz	246332
10/16 oz	71066	5/16 oz	246333

SELECT LIPON FROM DOWN NAMP # 1112A

PACK SIZE	10# Number	PACK SIZE	5# Number
40/4 oz	246426		
32/5 oz	246427		
28/6 oz	171006		
20/8 oz	918499		
18/9 oz	984324		
16/10 oz	246428		

SELECT LIPON FROM UP NAMP # 1112A

PACK SIZE	10# Number	PACK SIZE	5# Number
20/8 oz	173008	10/8 oz	246451
16/10 oz	939797	8/10 oz	246452
14/12 oz	985369	7/12 oz	246453
12/14 oz	918497	6/14 oz	246454
10/16 oz	918496	5/16 oz	246455

LIPON FROM HOLSTEIN

PACK SIZE	10# Number
16/10 oz	962340

UTILITY RIBEYE STEAK JACCARDED

PACK SIZE	10# Number
32/5 oz	246614
28/6 oz	246615
20/8 oz	246616

UTILITY RIBEYE STEAK MARINATED

PACK SIZE	10# Number
40/4 oz	246669
28/6 oz	216129
20/8 oz	965453
16/10 oz	965452

RIBEYE STEAKS

RIBEYE COWBOY



*Ribeye
Cowboy*

PRIME COWBOY STEAK **NAMP # 1103B**

PACK SIZE	10# Number
6/16-18 oz	228429
6/20-22 oz	79880
7/24 oz	236606

CAB COWBOY **NAMP # 1103B**

PACK SIZE	10# Number
8/18 oz	247721
6/18-20 oz	857574
6/20-22 oz	940418
8/20 oz	238666
8/22 oz	247724
7/24 oz	247722

CHOICE COWBOY STEAK **NAMP # 1103B**

PACK SIZE	10# Number
8/18 oz	247730
8/20 oz	998369
8/22 oz	247731
7/24 oz	973506

PRIME TOMAHAWK

PACK SIZE	10# Number
6/32-40 oz	857110

RIBEYE BONE IN



*Ribeye
Bone In*

CAB BONE IN **NAMP # 1103**

PACK SIZE	10# Number
10/16 oz	74645
8/18 oz	247708
8/20 oz	247709

CHOICE BONE IN **NAMP # 1103**

PACK SIZE	10# Number
12/14 oz	247751
10/16 oz	979691
8/18 oz	247752

RIBEYE SPLIT BONE



Ribeye Split Bone

CAB COWBOY SPLIT BONE

PACK SIZE	10# Number
12/14 oz	915631
10/16 oz	237822

CHOICE COWBOY SPLIT BONE

PACK SIZE	10# Number
12/14 oz	247749
10/16 oz	247750

SELECT COWBOY SPLIT BONE

PACK SIZE	10# Number
10/14-16 oz	247753

STRIP STEAKS

C/C STRIP STEAK

Strip Steak



CHOICE C/C STRIP STEAKS NAMP # 1180A

PACK SIZE	10# Number	PACK SIZE	5# Number
100/4 oz	896839		
28/6 oz	132106	14/6 oz	
24/7 oz	132107	12/7 oz	249060
20/8 oz	918546	10/8 oz	246489
18/9 oz	856750	9/9 oz	
16/10 oz	964549	8/10 oz	246510
15/11 oz	242584		
14/12 oz	918555	7/12 oz	246511
12/14 oz	982174	6/14 oz	246512
10/16 oz	965942	5/16 oz	246513
8/18 oz	246500	4/18 oz	246514
8/20 oz	246662	4/20 oz	246515
		5/22 oz	248478

BONE IN C/C STRIP STEAK

Bone In C/C Strip Steak



PRIME BONE IN C/C STRIP STEAK NAMP #1179A

PACK SIZE	10# Number	PACK SIZE	5# Number
12/14 oz	239821	6/14 oz	
10/16 oz	228017	5/16 oz	
8/18 oz	239820	4/18 oz	
8/20 oz	884620	4/20 oz	

PRIME C/C STRIP STEAK NAMP # 1180A

PACK SIZE	10# Number	PACK SIZE	5# Number
20/8 oz	57538	10/8 oz	246534
16/10 oz	246533	8/10 oz	246535
14/12 oz	877746	7/12 oz	246536
12/14 oz	890047	6/14 oz	246537
10/16 oz	890048	5/16 oz	246538

SELECT C/C STRIP STEAKS NAMP # 1180A

PACK SIZE	10# Number	PACK SIZE	5# Number
20/8 oz	918544	10/8 oz	246714
16/10 oz	918545	8/10 oz	246715
14/12 oz	939794	7/12 oz	246716
12/14 oz	74531	6/14 oz	246717
10/16 oz	939791	5/16 oz	246718

CAB BONE IN C/C STRIP STEAK NAMP # 1179A

PACK SIZE	10# Number	PACK SIZE	5# Number
20/8 oz	236500	10/8 oz	
16/10 oz	246524	8/10 oz	
12/14 oz	246525	6/14 oz	
10/16 oz	246526	5/16 oz	
8/18 oz	246527	4/18 oz	
8/20 oz	250730	4/20 oz	
8/22 oz	250731	4/22 oz	

CAB C/C STRIP STEAKS NAMP # 1180A

PACK SIZE	10# Number	PACK SIZE	5# Number
20/8 oz	123108	10/8 oz	246481
18/9 oz	246468	9/9 oz	246482
16/10 oz	939806	8/10 oz	246483
14/12 oz	121112	7/12 oz	246478
12/14 oz	212193	6/14 oz	246479
10/16 oz	987071	5/16 oz	246490
8/18 oz	246469	4/18 oz	246491
8/20 oz	246480	4/20 oz	246492
8/22 oz	253281		
		5/24 oz	940225

GATEWAY VALUE CUT C/C STRIP STEAK - NO ROLL NAMP # 1180A

PACK SIZE	10# Number	PACK SIZE	5# Number
28/6 oz	246529	14/6 oz	
20/8 oz	963052	10/8 oz	
16/10 oz	246540	8/10 oz	
14/12 oz	246541	7/12 oz	
12/14 oz	246542	6/14 oz	
10/16 oz	246543	5/16 oz	

CHOICE BONE IN C/C STRIP STEAK NAMP #1179A

PACK SIZE	10# Number	PACK SIZE	5# Number
14/12 oz	883311	7/12 oz	
12/14 oz	130114	6/14 oz	
10/16 oz	247592	5/16 oz	
8/18 oz	247593	4/18 oz	
8/20 oz	256179		

STRIP STEAKS

E/E STRIP STEAK

E/E Strip Steak



SELECT E/E STRIP STEAKS **NAMP # 1180**

PACK SIZE	10# Number	PACK SIZE	5# Number
24/7 oz	246766		
20/8 oz	75788		
16/10 oz	985065		
14/12 oz	990704		
12/14 oz	985213		
10/16 oz	74529		

GATEWAY VALUE CUT E/E STRIP STEAK - NO ROLL **NAMP # 1180**

PACK SIZE	10# Number	PACK SIZE	5# Number
28/6 oz	245156	14/6 oz	
20/8 oz	963080	10/8 oz	
16/10 oz	246544	8/10 oz	
14/12 oz	246545	7/12 oz	
12/14 oz	246546	6/14 oz	
10/16 oz	246547	5/16 oz	

CAB E/E STRIP STEAKS **NAMP # 1180**

PACK SIZE	10# Number	PACK SIZE	5# Number
28/6 oz	248476	14/6 oz	248477
20/8 oz	987061	10/8 oz	
16/10 oz	987066	8/10 oz	
15/11 oz	247625		
14/12 oz	964179	8/12 oz	
12/14 oz	987062	6/14 oz	
10/16 oz	74863	5/16 oz	

CHOICE E/E STRIP STEAKS **NAMP # 1180**

PACK SIZE	10# Number	PACK SIZE	5# Number
28/6 oz	255484		
20/8 oz	984295	10/8 oz	246517
16/10 oz	984294	8/10 oz	246518
14/12 oz	211873	7/12 oz	246519
12/14 oz	246516	6/14 oz	246520
10/16 oz	984296	5/16 oz	246521

FIRST CUT

First Cut



CAB FIRST CUT - FRESH

PACK SIZE	10# Number	PACK SIZE	5# Number
40/4 oz	940166	20/4 oz	
28/6 oz		14/6 oz	248584
24/7 oz	246501	12/7 oz	248578
20/8 oz	874426	10/8 oz	
16/10 oz	874445	8/10 oz	248577
14/12 oz	29564	7/12 oz	251571
12/14 oz	246502	6/14 oz	248576
10/16 oz	246503	5/16 oz	

CHOICE FIRST CUT - FRESH

PACK SIZE	10# Number	PACK SIZE	5# Number
28/6 oz	246505	14/6 oz	251077
24/7 oz	246507	12/7 oz	
20/8 oz	246508	10/8 oz	
16/10 oz	246509	8/10 oz	
14/12 oz	246530	7/12 oz	
12/14 oz	246531	6/14 oz	
10/16 oz	246532	5/16 oz	
8/20 oz	256716		

FIRST CUT - FZ

PACK SIZE	10# Number	PACK SIZE	5# Number
30/6 oz	215982	14/6 oz	
30/7 oz	885493	12/7 oz	
30/8 oz	215983	10/8 oz	
30/12 oz	215984	7/12 oz	
10/16 oz	246532	5/16 oz	

FILETS

FILET STEAK

Filet C/C



PRIME FILET STEAK C/C NAMP #1190B

PACK SIZE	10# Number	PACK SIZE	5# Number
40/4 oz	247312		
26/6 oz	247313	14/6 oz	247317
20/8 oz	869623		
18/9 oz	883563	10/8 oz	247318
16/10 oz	247314	9/9 oz	247319
14/12 oz	247315	8/10 oz	247320
12/14 oz	247316	7/12 oz	247321
8/18 oz	250096	6/14 oz	247322
Chateaubriand	879287		
Whole Skinned - 2 PC	247959		

CAB FILET STEAK C/C NAMP #1190B

PACK SIZE	10# Number	PACK SIZE	5# Number
40/4 oz	875887		
32/5 oz	864235	16/5 oz	247282
26/6 oz	247268	14/6 oz	247283
24/7 oz	247269	12/7 oz	247284
20/8 oz	987074	10/8 oz	247288
18/9 oz	247280	9/9 oz	247297
16/10 oz	987110	8/10 oz	247289
15/11 oz	850197	7/12 oz	247290
14/12 oz	236502	6/14 oz	247291
12/14 oz	247281	5/16 oz	247292
10/16 oz	869371		
7/24 oz	248049		

CHOICE FILET STEAK C/C NAMP #1190B

PACK SIZE	10# Number	PACK SIZE	5# Number
80/2 oz	242588		
40/4 oz	899552		
32/5 oz	247323	16/5 oz	247331
26/6 oz	247324	14/6 oz	247332
24/7 oz	231148	12/7 oz	247333
20/8 oz	985787	10/8 oz	247334
18/9 oz	872454	9/9 oz	247335
16/10 oz	985759	8/10 oz	247336
15/11 oz	247325		
14/12 oz	247279	7/12 oz	247337

SELECT FILET STEAK C/C FROM DOWN NAMP #1190B

PACK SIZE	10# Number	PACK SIZE	5# Number
40/4 oz	216080		
32/5 oz	247363	16/5 oz	247366
26/6 oz	247364	14/6 oz	247367
24/7 oz	247365	12/7 oz	247368

SELECT FILET STEAK C/C BARREL FROM UP NAMP #1190B

PACK SIZE	10# Number
32/5 oz	237991
28/6 oz	238014
20/8 oz	238013
16/10 oz	237995
14/12 oz	237994
12/14 oz	237993
10/16 oz	237992

SELECT FILET STEAK C/C FROM UP NAMP #1190B

PACK SIZE	10# Number	PACK SIZE	5# Number
20/8 oz	985480	10/8 oz	247380
18/9 oz	247372	9/9 oz	247381
16/10 oz	984249	8/10 oz	247382
15/11 oz	248587	15/11 oz	
14/12 oz	247373	7/12 oz	247383
12/14 oz	247374	6/14 oz	247384

UTILITY FILET STEAK C/C

PACK SIZE	10# Number	PACK SIZE	5# Number
32/5 oz	247385	16/5 oz	
28/6 oz	231362	14/6 oz	
20/8 oz	231325	10/8 oz	
16/10 oz	247386	8/10 oz	

CAB FILET STEAK NAMP #1190A

PACK SIZE	10# Number
16/10 oz	985169
CAB Skinned PSMO Whole	247287

CHOICE FILET STEAK NAMP #1190A

PACK SIZE	10# Number	PACK SIZE	5# Number
40/4 oz	247338	20/4 oz	247342
32/5 oz	247339	16/5 oz	247343
28/6 oz	247340	14/6 oz	247327
20/8 oz	231361	10/8 oz	247328
18/9 oz	247341	9/9 oz	247329
16/10 oz	74541	8/10 oz	247351
Ch Whole Skinned PSMO	247348		
Ch Whole Skinned PSMO C/C	247349		

SELECT FILET STEAK FROM DOWN NAMP #1190A

PACK SIZE	10# Number
32/5 oz	247369
28/6 oz	247370
24/7 oz	247371
20/8 oz	939984
18/9 oz	939781

SELECT FILET STEAK FRM UP NAMP #1190A

PACK SIZE	10# Number	PACK SIZE	5# Number
20/8 oz	939784	10/8 oz	
18/9 oz	939781	9/9 oz	
		8/10 oz	

GATEWAY FILET STEAK NAMP #1190A

PACK SIZE	10# Number
32/5 oz	937069
20/8 oz	937075
16/10 oz	937084
14/12 oz	937086

FILETS

FILET STEAK

UTILITY FILET STEAK

PACK SIZE	10# Number
40/4 oz	249826
32/5 oz	231365
20/8 oz	231364
16/10 oz	231363
Skinned	247571

RANGE FILET



CHOICE RANGE STEAK

PACK SIZE	10# Number	PACK SIZE	5# Number
28/6 oz	247352	14/6 oz	247356
24/7 oz	247353	12/7 oz	247357
20/8 oz	882299	10/8 oz	247358
18/9 oz	886354	9/9 oz	247359
16/10 oz	247354	8/10 oz	247360
14/12 oz	247355	7/12 oz	247361

CAB RANGE STEAK

PACK SIZE	10# Number	PACK SIZE	5# Number
26/6 oz	247299	14/6 oz	247305
20/8 oz	247301	10/8 oz	247311
18/9 oz		9/9 oz	248479
16/10 oz	247302	8/10 oz	247306
14/12 oz	247303	7/12 oz	247307

CHOICE RANGE STEAK B/W

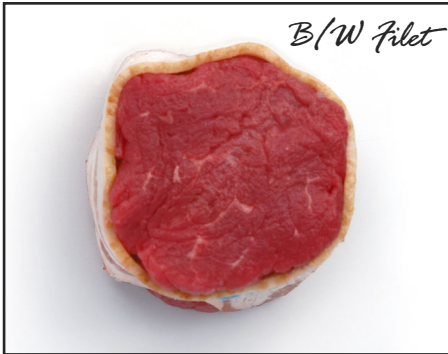
PACK SIZE	10# Number	PACK SIZE	5# Number
20/8 oz	985760	10/8 oz	
18/9 oz	985789	9/9 oz	
16/10 oz	74644	8/10 oz	

CAB RANGE STEAK B/W

PACK SIZE	10# Number	PACK SIZE	5# Number
24/7 oz	253356	12/7 oz	
20/8 oz	987105	10/8 oz	
16/10 oz	74874	8/10 oz	

FILETS

B/W FILET



B/W FILET STEAK 2 PC & TAILS

PACK SIZE	10# Number	PACK SIZE	5# Number
40/4 oz	965671	20/4 oz	
28/6 oz	247468	14/6 oz	
20/8 oz	984248	10/8 oz	
16/10 oz	247469	8/10 oz	
14/12 oz	247470	7/12 oz	
10/16 oz	247471	5/16 oz	
4-6 oz	247472		

CAB B/W FILET 2 PC

PACK SIZE	10# Number	PACK SIZE	5# Number
28/6 oz		14/6 oz	247467
24/7 oz	247465	12/7 oz	
20/8 oz	247466	10/8 oz	yes
20/8 oz	74686	10/8 oz	
16/10 oz	888333	8/10 oz	

CHOICE FILET STEAK B/W

PACK SIZE	10# Number	PACK SIZE	5# Number
20/8 oz	932868	10/8 oz	

UTILITY FILET STEAK B/W

PACK SIZE	10# Number	PACK SIZE	5# Number
32/5 oz	230267	16/5 oz	249820
28/6 oz	247387	14/6 oz	
24/7 oz	247388	12/7 oz	
20/8 oz	212157	10/8 oz	249821
18/9 oz	247389	9/9 oz	
16/10 oz	247390	8/10 oz	
		5/16 oz	249822

BONE-IN FILET



CAB BONE IN FILET

PACK SIZE	10# Number
16/10 oz	950207
14/12 oz	238667
15/12-14 oz	989143
10/16 oz	255276

CHOICE BONE IN FILET

PACK SIZE	10# Number
16/10 oz	247603
14/12 oz	247604
12/14 oz	247605
10/16 oz	247606

SELECT BONE IN FILET

PACK SIZE	10# Number
16/10 oz	984323
14/12 oz	247612
12/14 oz	247582
10/16 oz	247583

FILETS

FILET MEDALLIONS

Filet Medallion



CAB MEDALLIONS

PACK SIZE	10# Number	PACK SIZE	5# Number
56/3 oz	247298	28/3 oz	
40/4 oz	236631	20/4 oz	252543

MEDALLIONS

PACK SIZE	10# Number	PACK SIZE	5# Number
80/2 oz	243382	40/2 oz	
56/3 oz	966072	28/3 oz	
40/4 oz	965609	20/4 oz	
20/4 oz	254948		

MEDALLION PCS

PACK SIZE	10# Number
80/2 oz	966065

FILET CHAIN ON

Filet Chain On



CAB FILET STEAK C/ON

NAMP # 1189A

PACK SIZE	10# Number	PACK SIZE	5# Number

CAB FILET STEAK C/O SILVER OFF B/W

PACK SIZE	10# Number	PACK SIZE	5# Number
20/8 oz	989501	10/8 oz	
18/9 oz	75235	9/9 oz	

CHOICE FILET STEAK C/ON

PACK SIZE	10# Number	PACK SIZE	5# Number
20/8 oz	231320	10/8 oz	
16/10 oz	231321	8/10 oz	

FILET STEAK C/ON S/OFF

PACK SIZE	10# Number	PACK SIZE	5# Number
20/8 oz	74566	10/8 oz	

FILET STEAK C/ON S/OFF B/W

PACK SIZE	10# Number	PACK SIZE	5# Number
18/9 oz	989437	9/9 oz	
16/10 oz	985221	8/10 oz	

FILET B/F

CAB FILET B/F

PACK SIZE	10# Number	PACK SIZE	5# Number
28/6 oz		14/6 oz	250728

FILET PIT STYLE

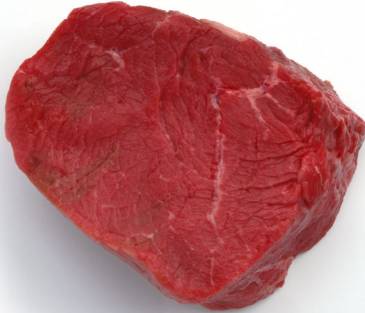
CHOICE PIT STYLE FILET

PACK SIZE	10# Number	PACK SIZE	5# Number
26/6 oz	247362	14/6 oz	
20/8 oz	985748	10/8 oz	

SIRLOIN

SIRLOIN FILET

Sirloin Filet



PRIME SIRLOIN FILET (BASEBALL CUT) NAMP # 1184F

PACK SIZE	10# Number	PACK SIZE	5# Number
28/6 oz	246447	14/6 oz	
20/8 oz	895942	10/8 oz	253887
14/12 oz	895941	7/12 oz	

CAB SIRLOIN FILET (BASEBALL CUT) NAMP # 1184F

PACK SIZE	10# Number	PACK SIZE	5# Number
28/6 oz	246813	14/6 oz	246815
24/7 oz	246814	12/7 oz	
20/8 oz	940086	10/8 oz	246816
16/10 oz	873154	8/10 oz	246817
14/12 oz	882110	7/12 oz	246818

CHOICE SIRLOIN FILET (BASEBALL CUT) NAMP # 1184F

PACK SIZE	10# Number	PACK SIZE	5# Number
40/4 oz	135504	20/4 oz	
28/6 oz	246819	14/6 oz	
20/8 oz	984267	10/8 oz	
16/10 oz	231328	8/10 oz	
14/12 oz	231327	7/12 oz	
12/14 oz	988832	6/14 oz	
10/16 oz	231676	5/16 oz	

SELECT SIRLOIN FILET (BASEBALL CUT) NAMP # 1184F

PACK SIZE	10# Number	PACK SIZE	5# Number
20/8 oz	984252	10/8 oz	

SIRLOIN FILET B/W

CHOICE B/W FILET

PACK SIZE	10# Number	PACK SIZE	5# Number
20/8 oz	231208		

TOP BUTT

Top Butt



PRIME C/C TOP BUTT STEAK NAMP # 1184B

PACK SIZE	10# Number	PACK SIZE	5# Number
20/8 oz	246830	10/8 oz	
16/10 oz	246871	8/10 oz	
14/12 oz	246831	7/12 oz	

CAB C/C TOP BUTT STEAK NAMP # 1184B

PACK SIZE	10# Number	PACK SIZE	5# Number
40/4 oz	247570	20/4 oz	
32/5 oz	125705	16/5 oz	246802
28/6 oz	125606	14/6 oz	
24/7 oz	125607	12/7 oz	
20/8 oz	986230	10/8 oz	246804
18/9 oz	69023	9/9 oz	
16/10 oz	74868	8/10 oz	246805
14/12 oz	953864	7/12 oz	246806
12/14 oz	246801	6/14 oz	
10/16 oz	74678	5/16 oz	

CHOICE C/C TOP BUTT STEAK NAMP # 1184B

PACK SIZE	10# Number	PACK SIZE	5# Number
40/4 oz	247245	20/4 oz	
32/5 oz	135705	16/5 oz	
28/6 oz	247548	14/6 oz	
24/7 oz	246820	12/7 oz	
20/8 oz	963695	10/8 oz	246825
18/9 oz	246821	9/9 oz	
16/10 oz	984265	8/10 oz	246826
14/12 oz	984266	7/12 oz	246827
12/14 oz	247246	6/14 oz	
10/16 oz	877194	5/16 oz	

SELECT C/C TOP BUTT STEAK NAMP # 1184B

PACK SIZE	10# Number	PACK SIZE	5# Number
40/4 oz	933749	20/4 oz	
32/5 oz	246828	16/5 oz	
28/6 oz	246840	14/6 oz	
20/8 oz	963691	10/8 oz	
16/10 oz	135510	8/10 oz	
14/12 oz	984253	7/12 oz	
10/16 oz	233143	5/16 oz	

CAB WHOLE C/C TOP BUTT NAMP # 184B

PACK SIZE	60# Number	PACK SIZE	10# Number
Whole C/C Top Butt	250741		940046

GARLIC/BUTTER MARINATED SELECT C/C TOP BUTT STEAK

PACK SIZE	10# Number
20/8 oz	216126

SIRLOIN

FULL CUT TOP BUTT

Full Cut Top Butt



CAB FULL CUT TOP BUTT STEAK NAMP # 1184A

PACK SIZE	10# Number	PACK SIZE	5# Number
28/6 oz	250403	14/6 oz	
20/8 oz	254112	10/8 oz	
16/10 oz	987075	8/10 oz	
14/12 oz	985624	7/12 oz	
10/16 oz	987087	5/16 oz	

CHOICE FULL CUT TOP BUTT STEAK NAMP # 1184A

PACK SIZE	10# Number	PACK SIZE	5# Number
28/6 oz	246841	14/6 oz	
20/8 oz	985747	10/8 oz	
18/9 oz	249290	8/10 oz	
16/10 oz	985746	7/12 oz	
14/12 oz	135512	5/16 oz	
10/16 oz	74552	4/20 oz	

SELECT FULL CUT TOP BUTT STEAK NAMP # 1184A

PACK SIZE	10# Number	PACK SIZE	5# Number
32/5 oz	869366	16/5 oz	
28/6 oz	246842	14/6 oz	
20/8 oz	74371	10/8 oz	
16/10 oz	984259	8/10 oz	
14/12 oz	984258	7/12 oz	
10/16 oz	74370	5/16 oz	
8/20 oz	74369	4/20 oz	

COULOTTE JACCARDED

Cap Steak



CAB COULOTTE STEAK (CAP STEAK) JACCARDED NAMP # 1184D

PACK SIZE	10# Number	PACK SIZE	5# Number
28/6 oz	246835	14/6 oz	
		12/7 oz	248696
20/8 oz	246836	10/8 oz	
18/9 oz	246837	9/9 oz	
16/10 oz	246838	8/10 oz	
14/12 oz	246839		

CHOICE COULOTTE STEAK NAMP # 1184D

PACK SIZE	10# Number	PACK SIZE	5# Number
32/5 oz	255485		
28/6 oz	246843	14/6 oz	
20/8 oz	966539	10/8 oz	
16/10 oz	231326	8/10 oz	
14/12 oz	246832	7/12 oz	

CAB COULOTTE STEAK B/F NAMP # 1184D

PACK SIZE	10# Number	PACK SIZE	5# Number
28/6 oz	246851	14/6 oz	248585
20/8 oz	246852	10/8 oz	
18/9 oz	246853	9/9 oz	
16/10 oz	246854	8/10 oz	
14/12 oz	246855	7/12 oz	

CHOICE COULOTTE STEAK B/F NAMP # 1184D

PACK SIZE	10# Number	PACK SIZE	5# Number
28/6 oz	246834	14/6 oz	
20/8 oz	966430	10/8 oz	
14/12 oz	246833	7/12 oz	

CHOICE COULOTTE STEAK CUBED 2X B/F NAMP # 1184D

PACK SIZE	10# Number	PACK SIZE	5# Number
28/6 oz	246844	14/6 oz	

JACCARDED WHOLE

CAB JACCARDED WHOLE NAMP # 184D

PACK SIZE	10# Number
5/1-2 lbs	246765

CHOICE JACCARDED WHOLE NAMP # 184D

PACK SIZE	10# Number	PACK SIZE	5# Number
5/2 lbs	252449	2/2 lbs	252448

PORTERHOUSE AND T-BONE

PORTERHOUSE

Porterhouse



PRIME PORTERHOUSE STEAK NAMP # 1173

PACK SIZE	10# Number	PACK SIZE	5# Number
10/16 oz	239619	5/16 oz	
8/18 oz	239825	4/18 oz	
8/20 oz	239610	4/22 oz	
8/22 oz	239824	3/24 oz	
7/24 oz	231095		
5/32 oz	917379		

CAB PORTERHOUSE STEAK NAMP # 1173

PACK SIZE	10# Number	PACK SIZE	5# Number
12/14 oz	250726	6/14 oz	
10/16 oz	71764	5/16 oz	
8/18 oz	987064	4/18 oz	
8/20 oz	124320	4/20 oz	
8/22 oz	987084	4/22 oz	
7/24 oz	247567	3/24 oz	
7/24 oz			
NV	247568		
5/30 oz	939982		

CHOICE PORTERHOUSE STEAK NAMP # 1173

PACK SIZE	10# Number	PACK SIZE	5# Number
14/12 oz	247595	7/12 oz	249913
12/14 oz	247596	6/14 oz	
10/16 oz	964557	5/16 oz	247599
8/18 oz	984481	4/18 oz	
8/20 oz	973508	4/20 oz	
8/22 oz	247597	4/22 oz	
7/24 oz	247598	3/24 oz	
6/28 oz	249810		

SELECT PORTERHOUSE STEAK NAMP # 1173

PACK SIZE	10# Number	PACK SIZE	5# Number
12/14 oz	247601	6/14 oz	
10/16 oz	58019	5/16 oz	
8/18 oz	985064	4/18 oz	
8/20 oz	985061	4/20 oz	
7/24 oz	247602	3/24 oz	

T-BONE

T-Bone



PRIME T-BONE STEAK NAMP # 1174

PACK SIZE	10# Number	PACK SIZE	5# Number
12/14 oz	239823	6/14 oz	
10/16 oz	239579	5/16 oz	
8/18 oz	239822	4/18 oz	
8/20 oz	884908	4/20 oz	

CAB T-BONE STEAK NAMP # 1174

PACK SIZE	10# Number	PACK SIZE	5# Number
16/10 oz	987055	8/10 oz	
14/12 oz	134012	7/12 oz	
12/14 oz	987057	6/14 oz	
10/16 oz	327307	5/16 oz	
8/18 oz	987058	4/18 oz	

CHOICE T-BONE STEAK NAMP # 1174

PACK SIZE	10# Number	PACK SIZE	5# Number
16/10 oz	984317	8/10 oz	
14/12 oz	984298	7/12 oz	
12/14 oz	984297	6/14 oz	
10/16 oz	964560	5/16 oz	
8/18 oz	247607	4/18 oz	
8/20 oz	871296	4/20 oz	

SELECT T-BONE STEAK NAMP # 1174

PACK SIZE	10# Number	PACK SIZE	5# Number
16/10 oz	984486	8/10 oz	
14/12 oz	74409	7/12 oz	
12/14 oz	964107	6/14 oz	
10/16 oz	144016	5/16 oz	
8/18 oz	984482	4/18 oz	

BALLTIP

BALLTIP

Balltip



SELECT BALLTIP STEAK

NAMP # 1185B

PACK SIZE	10# Number	PACK SIZE	5# Number
10/16 oz	245889	5/16 oz	

CAB BALLTIP STEAK B/F

NAMP # 1185B

PACK SIZE	10# Number	PACK SIZE	5# Number
28/6 oz	247756	14/6 oz	

CHOICE BALLTIP STEAK B/F

NAMP # 1185B

PACK SIZE	10# Number	PACK SIZE	5# Number
32/5 oz	247783	16/5 oz	

CAB BALLTIP STEAK

NAMP # 1185B

PACK SIZE	10# Number	PACK SIZE	5# Number
40/4 oz	230275	20/4 oz	
28/6 oz	247755	14/6 oz	
20/8 oz	230276	10/8 oz	
16/10 oz	230277	8/10 oz	
14/12 oz	242273	7/12 oz	
"Cut 1/4" Thick"	873232		

CHOICE BALLTIP STEAK SEAMED AND B/F

PACK SIZE	10# Number	PACK SIZE	5# Number
28/6 oz	247785	14/6 oz	
20/8 oz	880885	10/8 oz	

CHOICE BALLTIP STEAK

NAMP # 1185B

PACK SIZE	10# Number	PACK SIZE	5# Number
40/4 oz	966476	20/4 oz	
32/5 oz	232830	16/5 oz	
28/6 oz	231360	14/6 oz	
		12/7 oz	250205
20/8 oz	893220	10/8 oz	
18/9 oz	231366	9/9 oz	
16/10 oz	231367	8/10 oz	
14/12 oz	231368	7/12 oz	

SELECT MARINATED BALLTIP STEAK FZ

NAMP # 1185B

PACK SIZE	10# Number	PACK SIZE	5# Number
28/6 oz	247784	14/6 oz	
20/8 oz	229418	10/8 oz	
16/10 oz	48667	8/10 oz	

SHORT RIBS

CUBE STEAK

SHORT RIBS

Bone In Short Ribs



Boneless Short Ribs



CAB BI SHORT RIBS - PORTIONED **NAMP # 1123**

PACK SIZE	10# Number
28/6 oz	247823
20/8 oz	247824
16/10 oz	883566
14/12 oz	247825
12/14 oz	247826
10/16 oz	247827
8/18 oz	247828
8/20 oz	247829

CHOICE BONELESS SHORT RIBS

PACK SIZE	10# Number
40/4 oz	231309
32/5 oz	247830
28/6 oz	247831
20/8 oz	247834
16/10 oz	247835
14/12 oz	868134
12/14 oz	247832
10/16 oz	247836
"10 lbs 2" Cut"	247837
3x6x1	247838
2/5 lbs	250729

CAB BI SHORT RIBS - CUT THICKNESS **NAMP # 1123**

PACK SIZE	10# Number
"10 lbs 1/4" Cut"	247839
"10 lbs 1/2" Cut"	247840
"10 lbs 3/4" Cut"	247841
"10 lbs 1" Cut"	247842
"10 lbs 1 1/2" Cut"	247843
"10 lbs 2" Cut"	247818
"10 lbs 2" Cut Single Bone"	247907
"10 lbs 2 1/2" Cut"	247819
"10 lbs 3" Cut"	247845
"10 lbs 3 1/2" Cut"	247846
"10 lbs 4" Cut"	247847

Short Rib Osso Bucco



SHORT RIB OSSO BUCCO

PACK SIZE	10# Number	PACK SIZE	5# Number
1/10 pc	897084		

CUBE STEAK

Cube Steak



CAB CUBE STEAK **NAMP # 1100**

PACK SIZE	10# Number
40/4 oz	215908
32/5 oz	215914
28/6 oz	247861
20/8 oz	215915

BEEF CUBE STEAK **NAMP # 1100**

PACK SIZE	10# Number
56/3 oz	247862
40/4 oz	939839
32/5 oz	965627
28/6 oz	965093
20/8 oz	247863

VALUE ADDED

MISCELLANEOUS



Flat Iron

CAB FLAT IRON NAMP # 1114D

PACK SIZE	10# Number	PACK SIZE	5# Number
40/4 oz	974469	20/4 oz	249824
28/6 oz	247944	14/6 oz	249870
24/7 oz	156313	12/7 oz	
20/8 oz	974468	10/8 oz	254873
16/10 oz	881812	8/10 oz	248737
15/11 oz	156274	n/a	
14/12 oz	933890	7/12 oz	
12/14-16 oz	247945	6/14 oz	



Teres Major

CAB TERES MAJOR NAMP # 1114F

PACK SIZE	10# Number	PACK SIZE	5# Number
80/2 oz	215922	40/2 oz	
28/6 oz	247953	14/6 oz	
20/8 oz	913767	10/8 oz	
Rebox	247954		



Fajita Meat / Stir Fry

FAJITA MEAT / STIR FRY

PACK SIZE	10# Number	PACK SIZE	5# Number
		1/5 lb	216042
		2/5 lb	857140
		4/5 lb	216045



CAB Hanger Steak

CAB HANGER STEAK NAMP # 1140

PACK SIZE	10# Number	PACK SIZE	5# Number
28/6 oz	247942	14/6 oz	
20/8 oz	247943	10/8 oz	

CAB HANGER STEAK STRIP STYLE NAMP # 1140

PACK SIZE	10# Number	PACK SIZE	5# Number
32/5 oz	66219		
20/8 oz	66278	10/8 oz	
16/10 oz	66311		

SELECT TERES MAJOR NAMP # 1114F

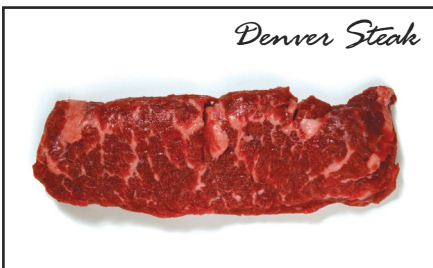
PACK SIZE	10# Number	PACK SIZE	5# Number
80/2 oz	216062	40/2 oz	
56/3 oz	247955	28/3 oz	
28/6 oz	247956	14/6 oz	
Skinned	247957		
Rebox	247958		



Stew Meat

STEW MEAT

PACK SIZE	10# Number	PACK SIZE	5# Number
	216047		216046



Denver Steak

DENVER STEAK

PACK SIZE	10# Number	PACK SIZE	5# Number
20/8 oz	253990		

VALUE ADDED

MISCELLANEOUS

SKIRT STEAK - CUT FROM OUTSIDE SKIRT MEAT - PEELED

PACK SIZE	10# Number	PACK SIZE	5# Number
28/6 oz		14/6 oz	249825
20/8 oz	247937	10/8 oz	
16/10 oz	247938	8/10 oz	
10 lbs - Bulk	966709		
Marinated - 6/4 Lbs	256715		

GATEWAY GRILL STK B/F

PACK SIZE	10# Number	PACK SIZE	5# Number
32/5 oz	247951	16/5 oz	
28/6 oz	247952	14/6 oz	

SKIRT STEAK - CUT FROM FLAP MEAT - PEELED

PACK SIZE	10# Number	PACK SIZE	5# Number
10 lbs - Bulk	965794		

BEEF LIVER SLICED

PACK SIZE	10# Number	PACK SIZE	5# Number
32/5 oz	247894	16/5 oz	
24/7 oz	247895	12/7 oz	

FLANK STEAK - JACCARDED

PACK SIZE	10# Number	PACK SIZE	5# Number
16/10 oz	238973	8/10 oz	
10 lbs	247939	3/24 oz	

TRI TIP STEAK

NAMP # 1185D

PACK SIZE	10# Number	PACK SIZE	5# Number
28/6 oz	250725	14/6 oz	
18/9 oz	247940	9/9 oz	
Jaccarded	247941		

SANDWICH STEAK TENDER TIP

NAMP # 1140

PACK SIZE	10# Number	PACK SIZE	5# Number
40/4 oz	216123	20/4 oz	

PORK

BONE-IN

Pork Loin Chop



BERKSHIRE PORK LOIN CHOP

NAMP # 1412

PACK SIZE	10# Number	PACK SIZE	5# Number
20/8 oz	248832	10/8 oz	
16/10 oz	849753	8/10 oz	
14/12 oz	248847	7/12 oz	
12/14 oz	248848	6/14 oz	
10/16 oz	248849	5/16 oz	

PORK LOIN CHOP C/C

NAMP # 1412

PACK SIZE	10# Number	PACK SIZE	5# Number
40/4 oz	965237	20/4 oz	
28/6 oz	249144	14/6 oz	
24/7 oz	248791	12/7 oz	
20/8 oz	965215	10/8 oz	
16/10 oz	965208	8/10 oz	
15/11 oz	242583		
14/12 oz	990707	7/12 oz	
12/14 oz	231375	6/14 oz	
10/16 oz	933723	5/16 oz	
8/18 oz	248793	4/18 oz	
8/20 oz	239809	4/20 oz	
8/22 oz	248794	4/22 oz	

Pork Rib Chop Frenched



BERKSHIRE PORK RIB CHOP FRENCHED LOLLIPOP

NAMP # 1410A

PACK SIZE	10# Number	PACK SIZE	5# Number
12/14 oz	68836	6/14 oz	

BERKSHIRE PORK RIB CHOP FRENCHED

NAMP # 1410A

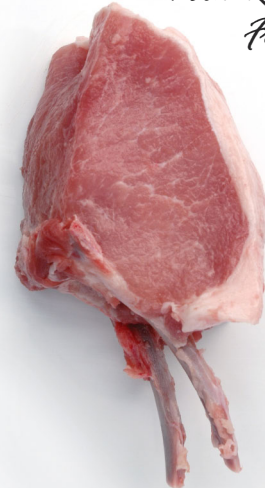
PACK SIZE	10# Number	PACK SIZE	5# Number
20/8 oz	243020	10/8 oz	
16/10 oz	855338	8/10 oz	
14/12 oz	248853	7/12 oz	254858
12/14 oz	248856	6/14 oz	

RIB CHOPS FRENCHED

NAMP # 1410A

PACK SIZE	10# Number	PACK SIZE	5# Number
32/5 oz	857575	16/5 oz	
28/6 oz	233144	14/6 oz	
20/8 oz	912828	10/8 oz	
18/9 oz	68779	9/9 oz	
16/10 oz	879309	8/10 oz	
14/12 oz	857573	7/12 oz	
12/14 oz	939778	6/14 oz	
10/16 oz	976429	5/16 oz	

Pork Rib Chop Frenched Double Bone



BERKSHIRE PORK RIB CHOP FRENCHED DOUBLE BONE

NAMP # 1410A

PACK SIZE	10# Number	PACK SIZE	5# Number
14/12 oz	852980	7/12 oz	
12/14 oz	855339	6/14 oz	
10/16 oz	248857	5/16 oz	

RIB CHOPS FRENCHED 2 BONE

NAMP # 1410A

PACK SIZE	10# Number	PACK SIZE	5# Number
14/12 oz	236633	7/12 oz	
10/16 oz	231383	5/16 oz	

PORK

BONE-IN



BERKSHIRE PIT STYLE PORK CHOP **NAMP # 1412A**

PACK SIZE	10# Number	PACK SIZE	5# Number
20/8 oz	248858	10/8 oz	

PIT STYLE PORK CHOP **NAMP # 1412A**

PACK SIZE	10# Number	PACK SIZE	5# Number
40/4 oz	251566	20/4 oz	
32/5 oz	963699	16/5 oz	
28/6 oz	248828	14/6 oz	
20/8 oz	216140	10/8 oz	
16/10 oz	248829	8/10 oz	
14/12 oz	248830	7/12 oz	
10/16 oz	963700	5/16 oz	



BERKSHIRE PORK RIB CHOP **NAMP # 1410A**

PACK SIZE	10# Number	PACK SIZE	5# Number
20/8 oz	248859	10/8 oz	

RIB CHOPS C/C **NAMP # 1410A**

PACK SIZE	10# Number	PACK SIZE	5# Number
40/4 oz	965268	20/4 oz	
32/5 oz	248493	16/5 oz	
28/6 oz	958507	14/6 oz	
24/7 oz	933073	12/7 oz	
20/8 oz	965260	10/8 oz	
18/9 oz	248494	9/9 oz	
16/10 oz	735316	8/10 oz	
14/12 oz	248495	7/12 oz	
12/14 oz	735318	6/14 oz	
10/16 oz	965259	5/16 oz	
8/18 oz	248496	4/18 oz	

PORK CHOP W/POCKET **NAMP # 1410A**

PACK SIZE	10# Number	PACK SIZE	5# Number
20/8 oz	216137	10/8 oz	
16/10 oz	248697	8/10 oz	
14/12 oz	248698	7/12 oz	251372

WEST CREEK PORK CHOP MARINATED

PACK SIZE	10# Number
40/4 oz	157496
32/5 oz	157495
28/6 oz	157494

SMOKED CHOPS

PACK SIZE	10# Number	PACK SIZE	5# Number
40/4 oz	965032	20/4 oz	
32/5 oz	248733	16/5 oz	
28/6 oz	248734	14/6 oz	
20/8 oz	964592	10/8 oz	
16/10 oz	248735	8/10 oz	
14/12 oz	121501	7/12 oz	
12/14 oz	112583	6/14 oz	
10/16 oz	248736	5/16 oz	

PORK

BONE-IN

C/C Pork Chops



PORK CHOP MARINATED

PACK SIZE	10# Number	PACK SIZE	5# Number
24/7 oz	243934	12/7 oz	
20/8 oz	965432	10/8 oz	
16/10 oz	248729	8/10 oz	
14/12 oz	248831	7/12 oz	
12/14 oz	248741	6/14 oz	
10/16 oz	857578	5/16 oz	

C/C PORK CHOPS NAMP # 1411

PACK SIZE	10# Number	PACK SIZE	5# Number
40/4 oz	965299	20/4 oz	
32/5 oz	248480	16/5 oz	
28/6 oz	248481	14/6 oz	
24/7 oz	251243	12/7 oz	
20/8 oz	965274	10/8 oz	
18/9 oz	248482	9/9 oz	
16/10 oz	248439	8/10 oz	
14/12 oz	231369	7/12 oz	
12/14 oz	248490	6/14 oz	
10/16 oz	248491	5/16 oz	
8/18 oz	248492	4/18 oz	

PORK CHOP E/E NAMP # 1410

PACK SIZE	10# Number	PACK SIZE	5# Number
40/4 oz	965196	20/4 oz	
32/5 oz	248819	16/5 oz	
28/6 oz	248820	14/6 oz	
20/8 oz	911367	10/8 oz	

PORK CHOPS END CUT NAMP # 1410B

PACK SIZE	10# Number	PACK SIZE	5# Number
40/4 oz	216147	20/4 oz	249809
32/5 oz	248888	16/5 oz	
20/8 oz	248905	10/8 oz	

BONELESS

Pork Chop Boneless



PORK CHOP BNLS C/C NAMP # 1412B

PACK SIZE	10# Number	PACK SIZE	5# Number
56/3 oz	249528	28/3 oz	
40/4 oz	965169	20/4 oz	
32/5 oz	555003	16/5 oz	
28/6 oz	249529	14/6 oz	
20/8 oz	965128	10/8 oz	
16/10 oz	940436	8/10 oz	
14/12 oz	249530	7/12 oz	
10/16 oz	249531	5/16 oz	
"3/4" Thick "	249515		
"1 1/4" Thick"	249516		
"2" Thick"	249517		

PORK

BONELESS

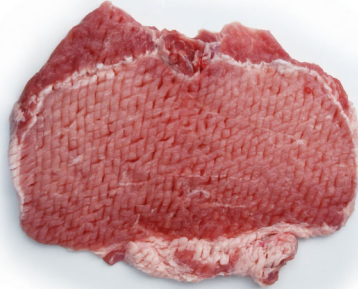
Pork Chop Bnls C/C B/f



PORK CHOP BNLS C/C B/F

PACK SIZE	10# Number	PACK SIZE	5# Number
40/4 oz	965122	20/4 oz	
32/5 oz	964581	16/5 oz	
28/6 oz	249513	14/6 oz	
24/7 oz	252391		
20/8 oz	965106	10/8 oz	
14/12 oz	250724	7/12 oz	

Pork Chop Bnls C/C B/f and Cubed



PORK CHOP BNLS C/C B/F AND CUBED

PACK SIZE	10# Number	PACK SIZE	5# Number
40/4 oz	249544	20/4 oz	
32/5 oz	249545	16/5 oz	
28/6 oz	249546	14/6 oz	
24/7 oz	249652	12/7 oz	

PORK CUTLET CUBED

PACK SIZE	10# Number	PACK SIZE	5# Number
40/4 oz	964606	20/4 oz	251765
32/5 oz	249553	16/5 oz	
28/6 oz	249554	14/6 oz	
24/7 oz	249555	12/7 oz	250401
20/8 oz	249556	10/8 oz	
16/10 oz	249533	8/10 oz	

PORK MILK AND HONEY

PACK SIZE	10# Number
2-6/8 lbs.	250744

PORK TENDERLOIN

PACK SIZE	10# Number	PACK SIZE	5# Number
80/2 oz	964890	40/2 oz	
40/4 oz	964885	20/4 oz	
20/8 oz	883411	10/8 oz	
18/9 oz		9/9 oz	249539
Whole			249570

Pork Filet Bnls B/W



PORK FILET BNLS B/W

PACK SIZE	10# Number	PACK SIZE	5# Number
40/4 oz	249518	20/4 oz	
32/5 oz	249519	16/5 oz	
28/6 oz	249541	14/6 oz	
24/7 oz	231329	12/7 oz	
20/8 oz	231358	10/8 oz	
16/10 oz	249543	8/10 oz	

PORK CHOP C/C CUBED

PACK SIZE	10# Number	PACK SIZE	5# Number
40/4 oz	965099	20/4 oz	
28/6 oz	249547	14/6 oz	

PORK

PORK RIBS

PORK BACK RIBS

PACK SIZE	10# Number
5-1.5 lb. AVG	249535

PORK ST. LOUIS STYLE RIBS

PACK SIZE	10# Number
5/2 lbs.	250727

PORK STEAK



PORK STEAK BI C/C

NAMP # 1406

PACK SIZE	10# Number
40/4 oz	873809
32/5 oz	244743
28/6 oz	244744
24/7 oz	244745
20/8 oz	918513
18/9 oz	964837
16/10 oz	918512
14/12 oz	918479
12/14 oz	244746
10/16 oz	918505
8/18 oz	244747
8/20 oz	244748
8/22 oz	244749
7/24 oz	244751
"(28) 1/4" Thick"	249653
"(20) 1/2" Thick"	249654
"(10) 3/4" Thick"	249655
"(12) 5/8" Thick"	249656
"(8) 1" Thick"	249660
25/12-14oz	249827

PORK STEAK REG CUT

PACK SIZE	10# Number
40/4 oz	964816
32/5 oz	244752
28/6 oz	244753
24/7 oz	244754
20/8 oz	964800
18/9 oz	964798
16/10 oz	964796
14/12 oz	964795
12/14 oz	244755
10/16 oz	964794
8/18 oz	244756
8/20 oz	244738
8/22 oz	244769
7/24 oz	244780
"(10) 5/8" Thick"	256736
"(12) 5/8" Thick"	249666
"(20) 5/8" Thick"	256737
"(10) 3/4" Thick"	249667

PORK STEAK BONELESS

PACK SIZE	10# Number
U/S	216156

LAMB

Lamb Loin Chop



LAMB LOIN CHOP

NAMP # 1232A

PACK SIZE	10# Number	PACK SIZE	5# Number
56/3 oz	249648	28/3 oz	249649
40/4 oz	964724	20/4 oz	
32/5 oz	249683	16/5 oz	
28/6 oz	75769	14/6 oz	
24/7 oz	249685	12/7 oz	
20/8 oz	964710	10/8 oz	
18/9 oz	249687	9/9 oz	
16/10 oz	249689	8/10 oz	
"20 - 1" Thick"	251572		
"15 - 1 1/2" Thick"	251573		

Lamb Rib Chop Frenched



LAMB RIB CHOP FRENCHED

NAMP # 1204D

PACK SIZE	10# Number	PACK SIZE	5# Number
32/5 oz	66338	16/5 oz	249668
28/6 oz	249691	14/6 oz	249692
20/8 oz	249693	10/8 oz	249694
16/10 oz	249695	8/10 oz	249696
14/12 oz	249697	7/12 oz	249698

Lamb Rack Frenched



LAMB RACK FRENCHED

NAMP # 1204D

PACK SIZE	10# Number
Rack Frnch	249699

LAMB RACK DOMESTIC

PACK SIZE	Item Number	PACK
Split Saw Chine	216169	1-6/9 Lb
Trimmed 8 Bone	940424	2-3/4 Lb
Rack Frenched	249699	2/1.5 Lb
Rack Frenched	255012	6/1.5 Lb

LAMB RACK AUSTRALIAN

PACK SIZE	Item Number	PACK
Lollipop Chop 2 oz AVG	245950	1-8 Lb

LAMB RACK NEW ZEALAND

PACK SIZE	Item Number	PACK
Lollipop Chop 1 oz AVG	887159	50 ct

VEAL

Veal Loin Chops



Veal Rib Chop Frenched



VEAL RACK CHOP READY

NAMP # 306C

PACK SIZE	10# Number
1-4 Lb	892837

VEAL RACK FRENCHED

NAMP # 306E

PACK SIZE	10# Number
1-4 Lb	964684

VEAL LOIN CHOPS

NAMP # 1332

PACK SIZE	10# Number	PACK SIZE	5# Number
20/8 oz	964444	10/8 oz	249676
16/10 oz	964440	8/10 oz	249677
14/12 oz	95711	7/12 oz	249701
12/14 oz	85714	6/14 oz	249703
10/16 oz	918192	5/16 oz	249705

VEAL RIB CHOP FRENCHED

NAMP # 1306E

PACK SIZE	10# Number	PACK SIZE	5# Number
16/10 oz	873245	8/10 oz	249711
14/12 oz	874448	7/12 oz	249715
12/14 oz	874447	6/14 oz	249717
10/16 oz	249719	5/16 oz	249721
8/18 oz	249723	4/18 oz	249724

REBOX

STRIPLOINS

DESCRIPTION	Item Number	PACK
USDA Prime Striploin 0x1	231206	2 - 11 Lb
CAB Prime Striploin 0x1	856532	1 - 12/15 Lb
CAB Striploin 1x1	964155	1 - 12/15 Lb
CAB Striploin 0x1	938555	1 - 12 Lb
CAB Striploin 0x1 - Nerve End Off	940151	1 - 10 Lb
Choice Striploin 1x1	31153	1 - 12/15 Lb
Choice Striploin 0x1	940377	1 - 12/15 Lb
Choice Striploin 0x1 - Jaccarded	173790	1 - 12/15 Lb
Choice Striploin 0x1 - Nerve End Off	236932	2 - 7/8 Lb
Choice Strip Japanese Style	900977	1 - 10/12 Lb
Select Striploin 0x1	892783	1 - 12/15 Lb
Select Striploin 0x1 - Jaccarded	879927	1 - 12/15 Lb
Select Strip Japanese Style	900931	1 - 10/12 Lb

PSMO

DESCRIPTION	Item Number	PACK
USDA Prime PSMO 5 UP	231344	4 - 6 Lb
CAB Prime PSMO 5 UP	856534	2 - 6 Lb
CAB Choice PSMO 5 UP	964149	2 - 6 Lb
Choice PSMO 5 UP	940360	2 - 5/7 Lb
Select PSMO 5 UP	940373	2 - 5/7 Lb
Utility PSMO 5 UP	227746	4 - 5/7 Lb
Utility PSMO 5 UP	964041	2 - 5/7 Lb

RIBEYES

DESCRIPTION	Item Number	PACK
USDA Prime Ribeye Lipon Hvy	231206	2 - 15 Lb
CAB Prime Ribeye Lipon Hvy	856554	1 - 15 Lb
CAB Ribeye Lipon Hvy	940382	1 - 15 Lb
USDA Choice Ribeye Lipon Hvy	940368	1 - 15 Lb
USDA Select Ribeye Lipon Hvy	940341	1 - 13 Lb
USDA Select Ribeye Lipon Hvy - Jaccarded	879942	1 - 13 Lb
CAB Ribeye Lipon Dwn	964175	1 - 15 Lb
USDA Choice Ribeye Lipon Dwn	918338	1 - 15 Lb
CAB Export Ribeye Dwn	940388	1 - 15/18 Lb
USDA Choice 109 Rib	940370	1 - 22 Lb

TOP SIRLOIN

DESCRIPTION	Item Number	PACK
USDA Prime Top Butt	231384	2 - 13 Lb
USDA Prime Top Butt CC	241014	2 - 6.5 Lb
CAB Top Butt CC	940046	1 - 8/11 Lb
CAB Top Butt CC	250741	10 - 8/11 Lb
CAB Top Butt	964194	2 - 14 Lb
Choice Top Butt	231147	1 - 14 Lb
Choice Top Butt - Jaccarded	231145	2 - 14 Lb
Select Top Butt	883621	1 - 14 Lb



BALLTIPS

DESCRIPTION	Item Number	PACK
CAB Balltips 2 UP	940414	2 - 13/18 Lb
CAB Balltips 2 UP - Jaccarded	939971	4 - 13/18 Lb
CAB Balltips 2 UP - Jaccarded	251076	1 - 10 Lb
Choice Balltips 2 UP - Jaccarded	940366	4 - 13/18 Lb
Choice Balltips 2 UP - Jaccarded	247786	4 - 2/3 Lb

TERES MAJOR

DESCRIPTION	Item Number	PACK
CAB Teres Major	247954	1 - 12/15 lb
Select Teres Major	247958	1 - 12/15 Lb

ROUNDS

DESCRIPTION	Item Number	PACK
CAB Top Round (Inside)	964201	1 - 18/24 Lb
CAB Top Round (Inside) Denuded	964142	1 - 15/20 Lb
Choice Top Round (Inside)	963715	1 - 18/24 Lb
Select Top Round (Inside)	211866	1 - 18/24 Lb
CAB Eye of Round	913957	2 - 5/6 Lb
CAB Bottom Round Flat (Beef Flats)	964198	1 - 12/15 Lb
Choice Peeled Knuckle	173603	2 - 8/10 lb
Peeled Knuckle (K-Butt)	940354	2 - 8/10 lb

REBOX

SHORTLOIN

DESCRIPTION	Item Number	PACK
CAB Shortloin 0x1	939990	1 - 20/25 lb

BRISKET

DESCRIPTION	Item Number	PACK
CAB Whole Brisket (Deckle Off)	940379	1 - 8/11 lb

CHUCK ROLL

DESCRIPTION	Item Number	PACK
Chuck Roll Bnls Neck Off	938284	1 - 20/30 lb

FLANK

DESCRIPTION	Item Number	PACK
Beef Flank Steak	963713	2 - 7/12 lb
Beef Flank Steak - Jaccarded	247939	1 - 7/12 lb

FLAP MEAT

DESCRIPTION	Item Number	PACK
CAB Beef Flap Meat - Jaccarded	965796	1 - 10/15 lb

SHORT RIBS

DESCRIPTION	Item Number	PACK
CAB B/I Beef Short Ribs	249061	4/6 lb
Choice Boneless Short Ribs	250729	2/5 lb

SKIRT STEAK

DESCRIPTION	Item Number	PACK
Beef Outside Skirt Meat PLD - Jaccarded	966709	1 - 10/15 lb

TRI TIP

DESCRIPTION	Item Number	PACK
Beef Tri Tip - Jaccarded	247941	1 - 10/12 lb